



welcome home

4127 E 6th St
Kansas City, MO 64124



This new-construction, energy-efficient home offers year-round savings and comfort. With a covered front porch, two family spaces, and a fully finished basement, you'll have plenty of space for all your needs.

Key features

- Interest-free mortgage
- New construction
- 5 bed / 3 bath: 1,800 sq. ft.
- Finished basement
- Luxury vinyl plank flooring
- Off-street parking
- All new appliances
- Storage shed
- ENERGY STAR® rated

Get Started



or call (816) 924-1096



together we build



📍 1423 E. Linwood Blvd. • Kansas City, MO 64109

📞 (816) 924-1096

✉️ info@habitatkc.org

🌐 habitatkc.org

Become a homeowner with Habitat KC

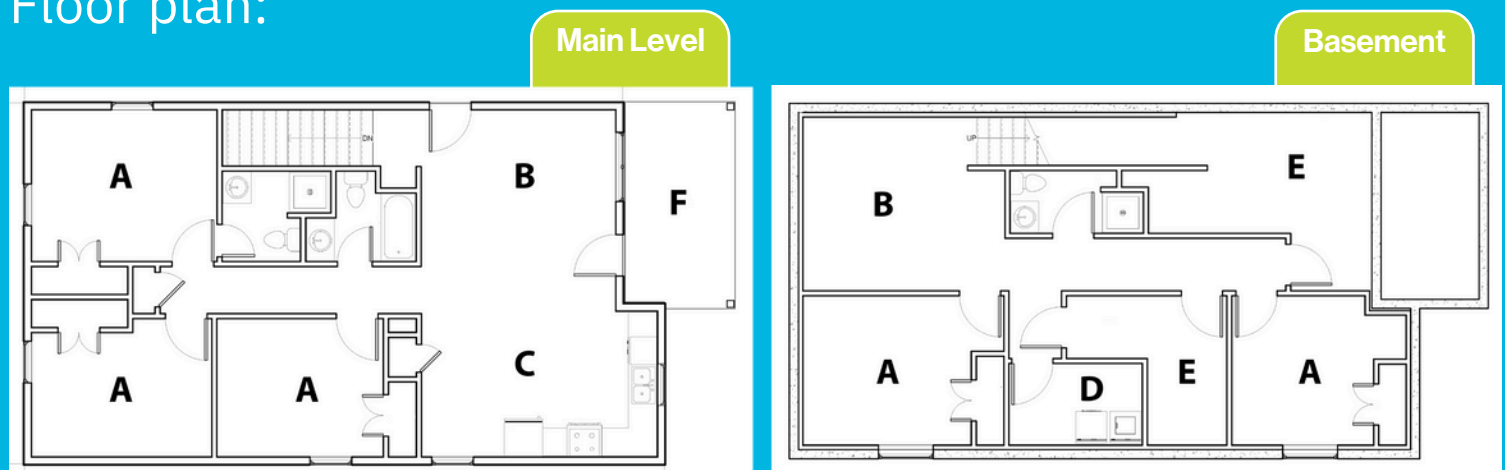
Habitat for Humanity of Kansas City provides a path to affordable homeownership for working families who have been shut out of the housing market due to systemic inequities and the current housing market dynamics.

Qualifications for this home*

- **Minimum borrower income: \$34K**
- **Maximum AML: 60%**
- **Willingness to partner**
- *** Subject to eligibility review**

For more information about this home and other opportunities available through Habitat KC, visit habitatkc.org or call (816) 924-1096.

Floor plan:



A. Bedroom B. Family space C. Kitchen D. Laundry E. Storage/Mechanical F. Covered porch

6 unique features of Lykins:

History: Lykins is one of Kansas City's oldest neighborhoods, with roots dating back to the late 1800s as a hub for immigrant and working-class families. Its historic homes and tree-lined streets reflect a rich architectural heritage shaped by generations of diverse residents.

Transportation: Lykins is located 2 1/2 miles due east of Kansas City's busy downtown. Three east-west bus lines serve the Northeast into Downtown.

Education: Whittier Elementary is located within the boundaries of Lykins and has a remarkably diverse and engaged population. Whittier tops the list for attendance rates and academic performance in the district.

Diversity: Lykins is home to a culturally rich community with nearly 20 languages spoken. Hispanics make up about 34% of the population, and refugees from Southeast Asia and East Africa further enrich its diversity.

Park and Green Space: Lykins Square Park has been transformed with new walkways, lighting, and play equipment, creating a vibrant and welcoming green space at the heart of the neighborhood. These recent improvements reflect the community's commitment to revitalization and making Lykins a great place to live, play, and connect.

Proximity to Downtown: Lykins sits just 2–3 miles east of Downtown KC, offering easy access to the Power & Light District, Union Station, City Market, and cultural hotspots.