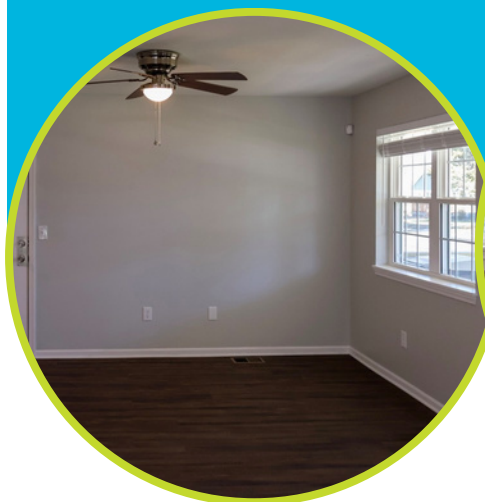




welcome home

2520 Park Ave.
Kansas City, MO 64127



This new-construction, energy-efficient home offers year-round savings and comfort. With a covered front porch, two family spaces, and a fully finished basement, you'll have plenty of space for all your needs.

Key features

- Interest-free mortgage
- New construction
- 5 bed / 3 bath: 1,800 sq. ft.
- Finished basement
- Luxury vinyl plank flooring
- Off-street parking
- All new appliances
- Storage shed
- ENERGY STAR® rated

Get Started



or call (816) 924-1096



together we build



📍 1423 E. Linwood Blvd. • Kansas City, MO 64109

📞 (816) 924-1096

✉️ info@habitatkc.org

🌐 habitatkc.org

Become a homeowner with Habitat KC

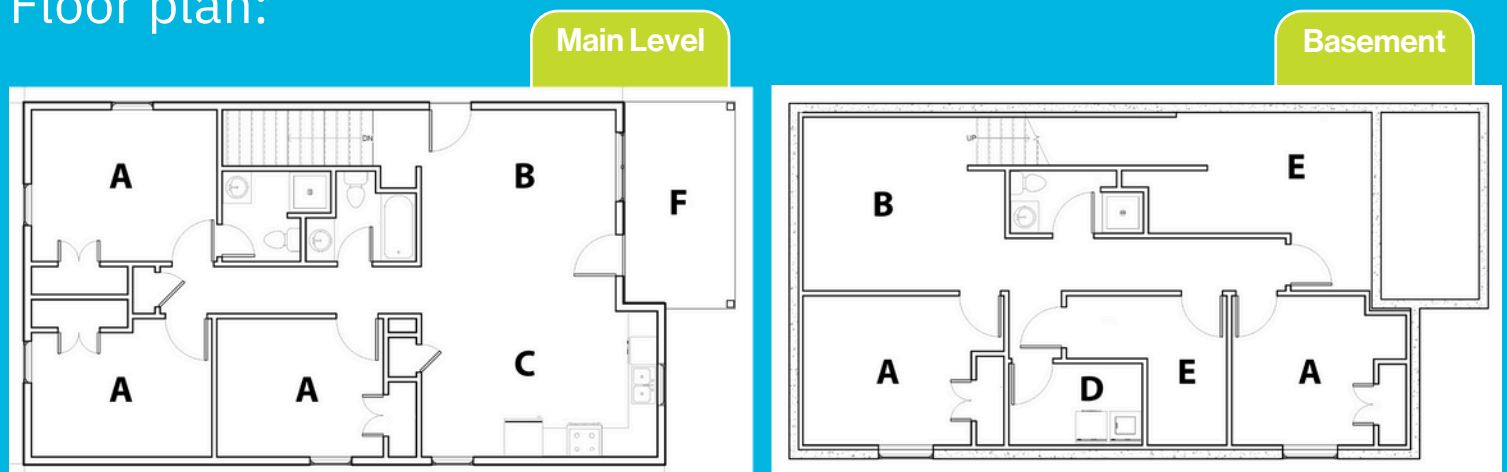
Habitat for Humanity of Kansas City provides a path to affordable homeownership for working families who have been shut out of the housing market due to systemic inequities and the current housing market dynamics.

Qualifications for this home*

- **Minimum borrower income: \$36K**
- **Maximum AML: 80%**
- **Willingness to partner**
- *** Subject to eligibility review**

For more information about this home and other opportunities available through Habitat KC, visit habitatkc.org or call (816) 924-1096.

Floor plan:



A. Bedroom B. Family space C. Kitchen D. Laundry E. Storage/Mechanical F. Covered porch

6 unique features of Wendell Phillips:

History: Wendell Phillips was once home to many famous Jazz musicians, and has a strong sense of artistic pride. Once home to a stadium where Jackie Robinson played, the this neighborhood is brimming with culture and history.

Classic Style: Wendell Phillips is full of colorful minimal traditionals and American Foursquares. Stone beams and foundations, farmhouse roofs, brick chimneys, and dormer windows paint a classic Americana picture.

Public Transit: Wendell Phillips is a highly walkable neighborhood with easy access to public transportation.

Diversity: Wendell Phillips is a very diverse, community. The blend of cultures, incomes, and backgrounds is celebrated in the the local foods, events, and cultural celebrations.

Parks and Green Spaces: Wendell Phillips features several parks, including Blues Park and Nelson C. Crews Square Park. These green spaces provide great opportunities to enjoy a wide variety of outdoor activities.

Proximity to Downtown: The neighborhood is conveniently located just minutes from downtown, providing easy access to the city's amenities, including shopping, museums, dining, entertainment, and employment opportunities.