



welcome home

1213 Pennsylvania
Kansas City, MO 64105



This new-construction, energy-efficient home offers year-round savings and comfort. With a covered front porch, two family spaces, and a fully finished basement, you'll have plenty of space for all your needs.

Key features

- Interest-free mortgage
- New construction
- 6 bed / 3 bath: 1,900 sq. ft.
- Finished basement
- Luxury vinyl plank flooring
- Off-street parking
- All new appliances
- Attached garage
- ENERGY STAR® rated

Get Started



or call (816) 924-1096



together we build



📍 1423 E. Linwood Blvd. • Kansas City, MO 64109

📞 (816) 924-1096

✉️ info@habitatkc.org

🌐 habitatkc.org

Become a homeowner with Habitat KC

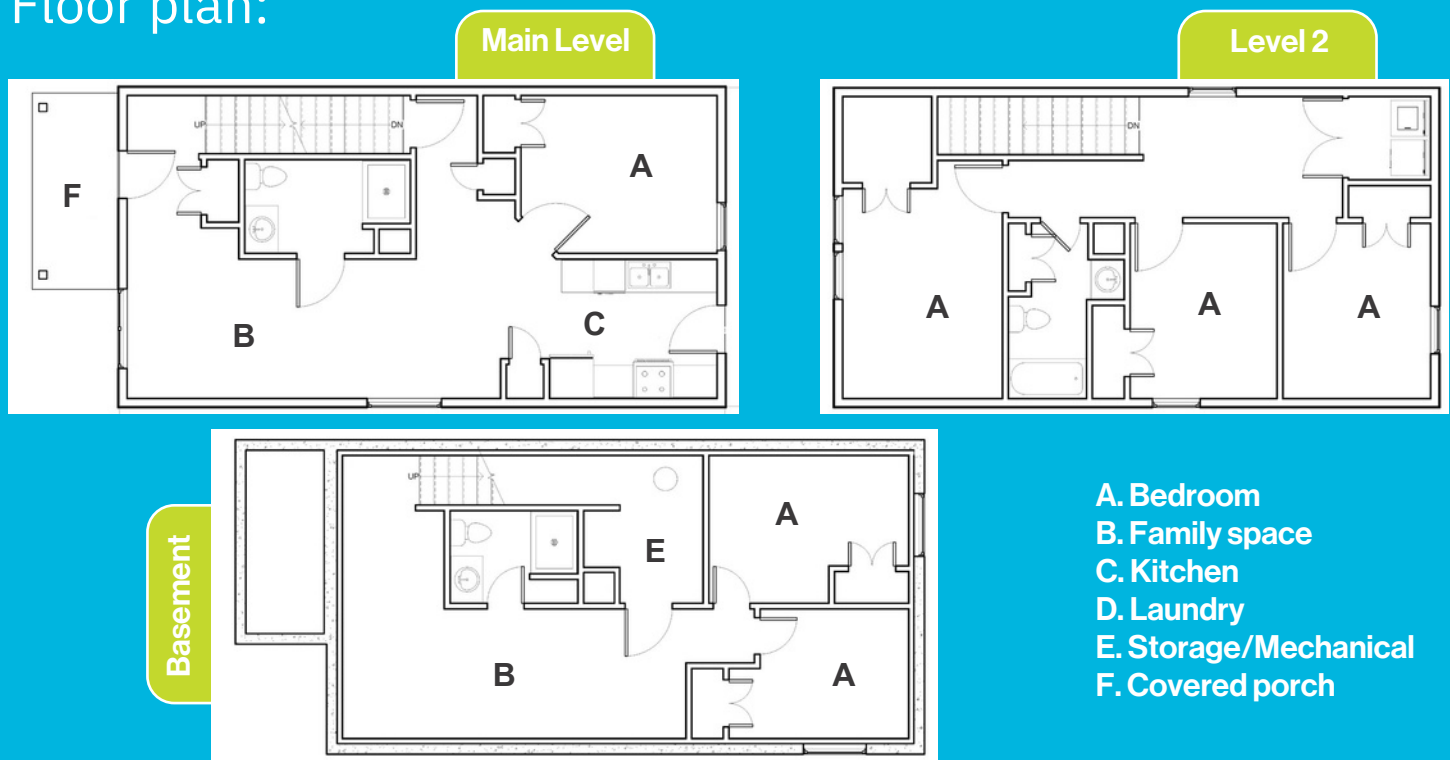
Habitat for Humanity of Kansas City provides a path to affordable homeownership for working families who have been shut out of the housing market due to systemic inequities and the current housing market dynamics.

Qualifications for this home*

- **Minimum borrower income: \$36K**
- **Maximum AML: 80%**
- **Willingness to partner**
- *** Subject to eligibility review**

For more information about this home and other opportunities available through Habitat KC, visit habitatkc.org or call (816) 924-1096.

Floor plan:



Reasons Armourdale is right for you

History: Armourdale is one of Kansas City's oldest neighborhoods, with a strong sense of community pride. Its history is deeply rooted in the early industrial development of Kansas City, giving this neighborhood a unique charm.

School Choice: As a Kansas resident, you will have the right to send your child to any school in the state of Kansas.

Parks and Green Spaces: Armourdale is home to several parks, including the large Kaw Point Park, which offers river views, walking trails, and opportunities for outdoor activities like fishing and kayaking.

Walkability and Public Transit: Armourdale is a walkable neighborhood with access to public transportation, making it easy for residents to get around without relying heavily on a car.