



Habitat
for Humanity®
of Kansas City

welcome home

1137 Pennsylvania
Kansas City, KS 66105



This new-construction, energy-efficient home offers year-round savings and comfort. With a covered front porch, two family spaces, and a fully finished basement, you'll have plenty of space for all your needs.

Key features

- Interest-free mortgage
- New construction
- 5 bed / 3 bath: 1,800 sq. ft.
- Finished basement
- Luxury vinyl plank flooring
- Off-street parking
- All new appliances
- Attached garage
- ENERGY STAR® rated

Get Started



or call (816) 924-1096



Habitat for Humanity
of Kansas City

together we build



1423 E. Linwood Blvd. • Kansas City, MO 64109

(816) 924-1096

info@habitatkc.org

habitatkc.org

Become a homeowner with Habitat KC

Habitat for Humanity of Kansas City provides a path to affordable homeownership for working families who have been shut out of the housing market due to systemic inequities and the current housing market dynamics.

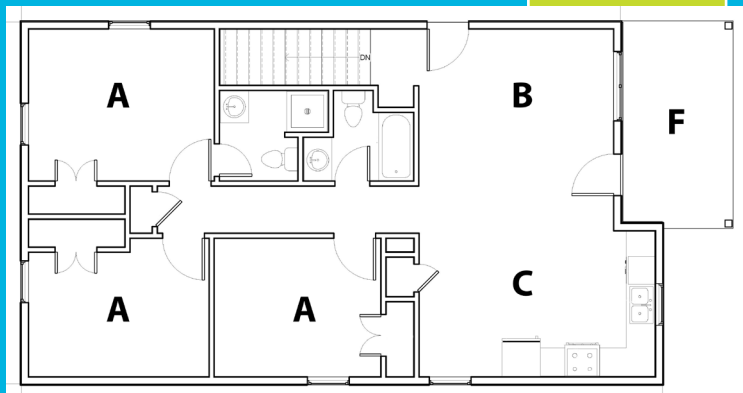
Qualifications for this home*

- **Minimum borrower income: \$36K**
- **Maximum AMI: 60%**
- **Willingness to partner**
- *** Subject to eligibility review**

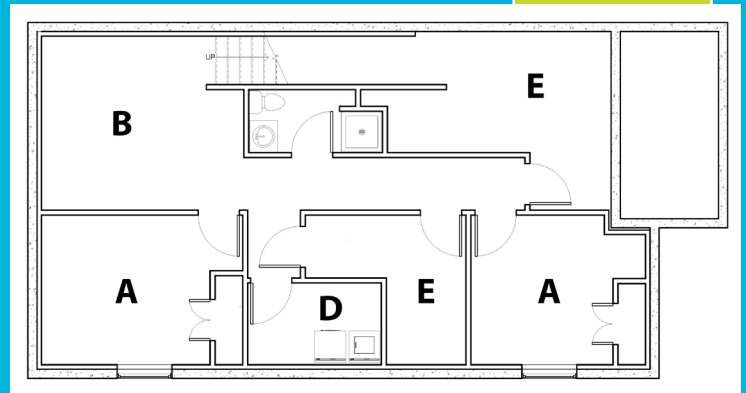
For more information about this home and other opportunities available through Habitat KC, visit habitatkc.org or call (816) 924-1096.

Floor plan:

Main Level



Basement



A. Bedroom B. Family space C. Kitchen D. Laundry E. Storage/Mechanical F. Covered porch

6 Reasons Armourdale is right for you

History: Armourdale is one of Kansas City's oldest neighborhoods, with a strong sense of community pride. Its history is deeply rooted in the early industrial development of Kansas City, giving this neighborhood a unique charm.

School Choice: As a Kansas resident, you will have the right to send your child to any school in the state of Kansas.

Parks and Green Spaces: Armourdale is home to several parks, including the large Kaw Point Park, which offers river views, walking trails, and opportunities for outdoor activities like fishing and kayaking.

Proximity to Downtown: The neighborhood is conveniently located just minutes from downtown, providing easy access to the city's amenities, including a variety of shopping, dining, entertainment, and employment opportunities.

Cultural Diversity: Armourdale is a culturally diverse neighborhood, adding to its vibrancy and sense of community. This diversity is reflected in the local food, events, and cultural celebrations.

Walkability and Public Transit: Armourdale is a walkable neighborhood with access to public transportation, making it easy for residents to get around without relying heavily on a car.